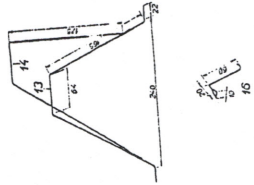
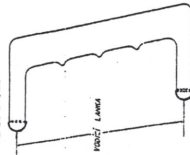


POHLED ZE PŘEDU



RÍDÍČÍ RUKOVĚT



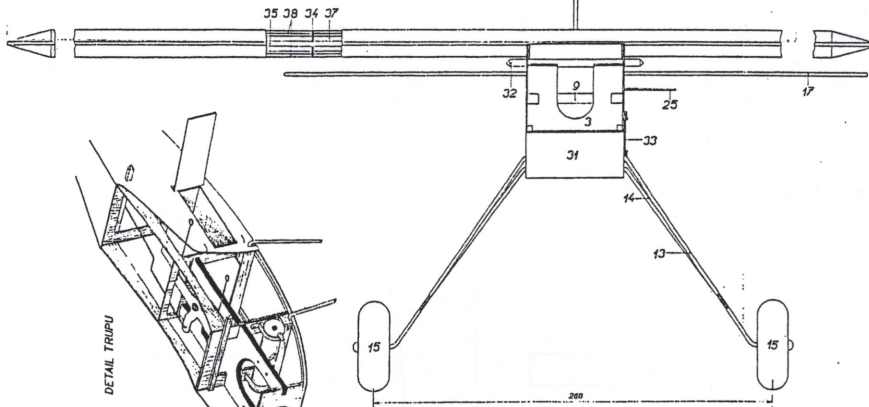
ŠKODA LIT. č. 3-1

I PRO

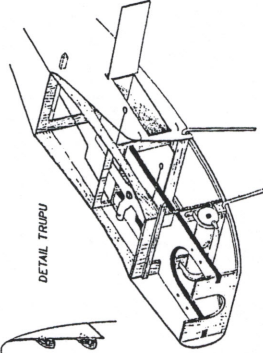


U-AKROBAT

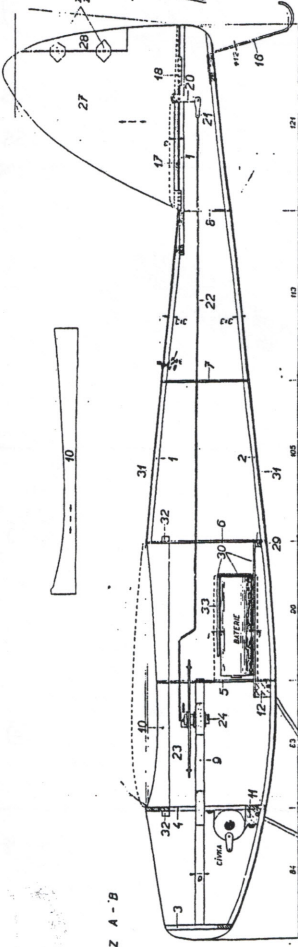
STAVĚNÍ NA ZEMĚ PROVOZOVÁNÍ VZROVNĚNÝM A NEVROVNĚNÝM
TYPY: I PRO
VÝROBA: 1932
VÝKON: 150 HP
RÁZ: 12,50 m
RÁZ: 12,50 m
RÁZ: 12,50 m
RÁZ: 12,50 m



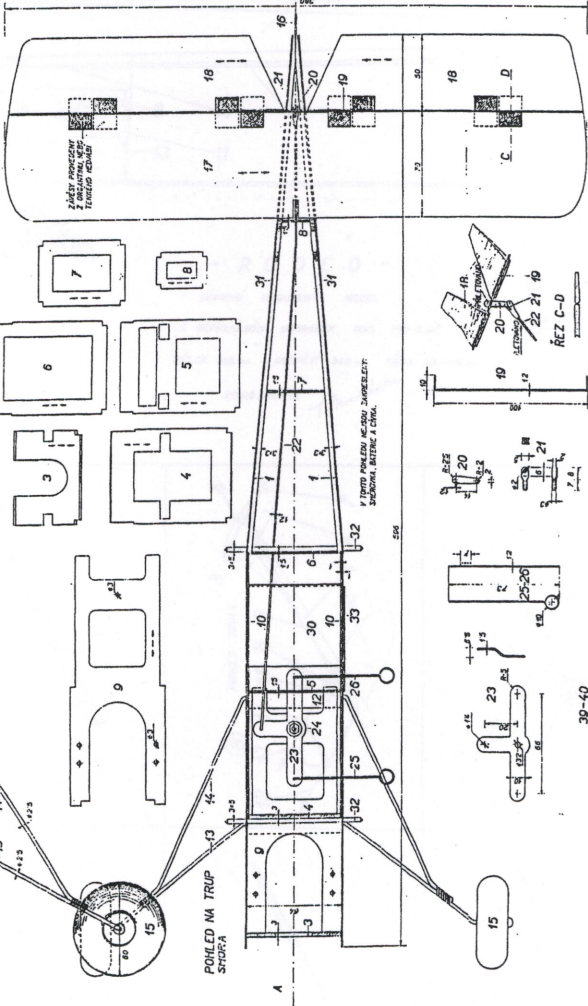
DETAIL TRUPU



3-13
3-12
3-11
3-10
3-9
3-8
3-7
3-6
3-5
3-4
3-3
3-2
3-1

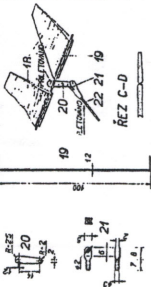


ŘEZ A-B

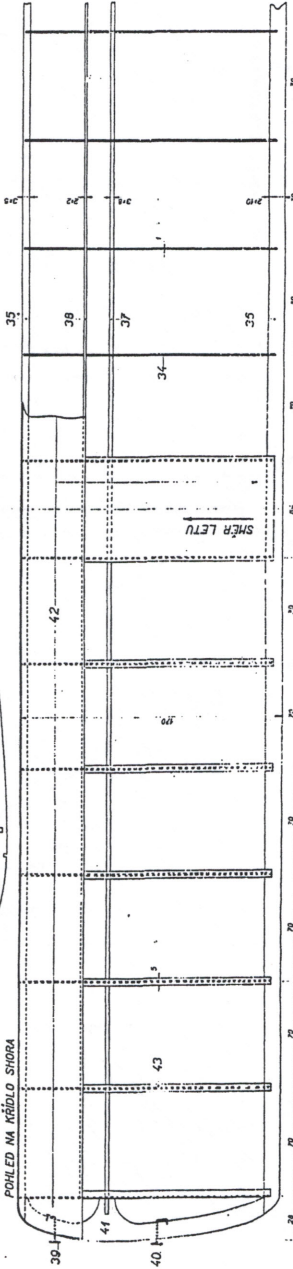


POHLED NA TRUP ŠIROKA

3-13
3-12
3-11
3-10
3-9
3-8
3-7
3-6
3-5
3-4
3-3
3-2
3-1



ŘEZ C-D



POHLED NA KŘÍDLO ŠIROKA

Table with multiple columns and rows, likely a parts list or assembly schedule. The table contains technical specifications and reference numbers for various components.